

# Wireless Sports Earphones With Flexible Earhook (BTS29)

# VALORE

Thank you for purchasing the Valore Wireless Sports Earphones With Flexible Earhook (BTS29).

- Built-in microphone enables hands-free usage
- Flexible earhook allows secure fit to all ear sizes
- Answer calls and adjust volume easily with on-cord controls

**Important:** Please read the user manual thoroughly before using your wireless sports earphones with flexible earhook.

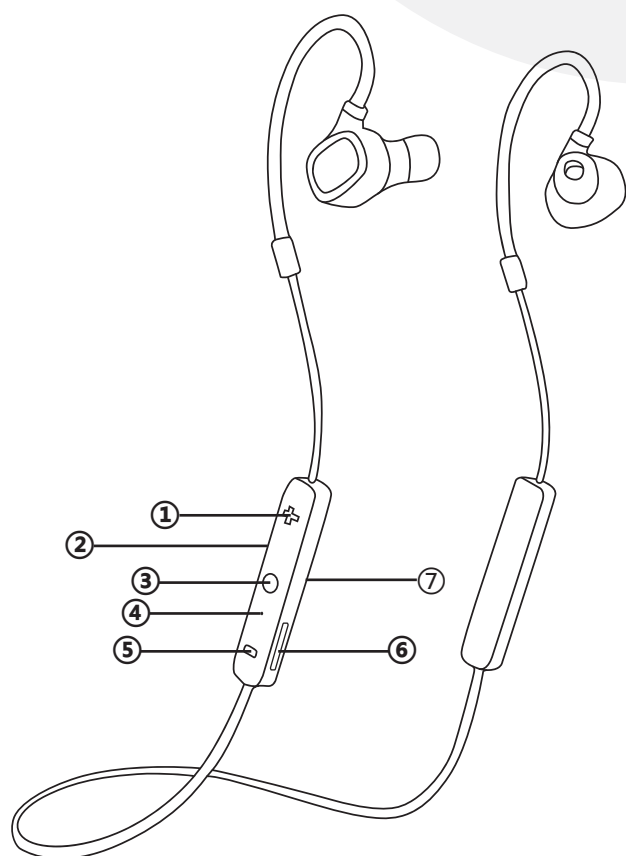
## Specifications:

- Wireless range: Up to 10m
- Built-in battery: 85mAh Lithium battery
- Charging time: Approximately 2 hours
- Playback/working time: Up to 4 hours
- Supports: HSP/HFP/A2DP/AVRCP
- Power input: DC5V/80±15mA
- Power output: 3mW
- Cable length: 500mm

## Package Contents:

- Wireless sports earphones with flexible earhook
- USB charging cable (500mm)
- Ear tips x 3 pairs

## UNDERSTANDING THE PRODUCT

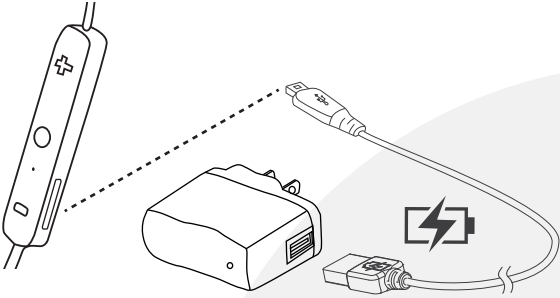


- ① Volume +
- ② On/Off switch
- ③ Multi-functional button (MFB)
- ④ LED indicator
- ⑤ Volume -
- ⑥ Micro USB charging port
- ⑦ Microphone

# START USING THE WIRELESS EARPHONES

## 1) Charging the wireless headset

Connect the USB charging cable to the earphones located side of the controls. When red LED turns blue, charging is complete.



Note: Please charge the earphones for at least 8 hours before first use. Please make sure that it is switched off when charging is in progress.

## 2) Pairing the wireless earphones (switched off)

Step 1: Activate Bluetooth function on your mobile device to begin pairing with earphones.

Step 2: Switch on the wireless earphones. (Earphones will enter pairing mode automatically)

Step 3: Connect to the earphones by selecting 'Valore BTS29' under the device list.

Step 4: Once connected, the LED light at the Bluetooth button will blink blue in interval of 5 seconds.

Note: If the pairing is not successful, please turn off wireless earphones first, and then re-pair again. After pairing is successful, paired devices will remember each other. Unless pairing information is deleted because of new pairing, no need to pair when using the next time.

If you want to pair the wireless earphones with other devices, please turn off Bluetooth function of existing source device, and pair the wireless earphones with the new device according to steps 1-4 mentioned above.

## 3) Wireless earphones controls

Hang up call: Short press Multifunctional button

Rejecting call: Double press Multifunctional button

Transfer call from earphones to mobile: Short press Multifunctional button when in call

Play/Pause/Answer: Short press Multifunctional button

Volume up: Short press Volume +

Volume down: Short press Volume -

Previous track: Long press Volume -

Next track: Long press Volume +

Chinese/English language switch: At the pairing status, long press Multifunctional button and Volume + simultaneously about 1 second

# TROUBLESHOOTING

## **Issue 1: Earphones is unable to connect successfully to your mobile device**

Problem 1: Earphones battery is flat

Solution: Fully charge the earphones (2 hours) and retry connection with your mobile device.

Problem 2: Earphones not paired to your mobile device

Solution: Make sure that it is successfully paired upon selecting 'Valore BTS29' in the device list.

Problem 3: Earphones and mobile device too far apart

Solution: Make sure that it is within a metre range during pairing and connection.

Problem 4: Earphones connected to other mobile device

Solution: Make sure that it has already been disconnected before making a new connection with a new device.

## **Issue 2: Sound from the earphones is too soft or silent**

Problem 1: Earphones battery is low / flat

Solution: Fully charge the earphones (2 hours) and retry connection with your mobile device.

Problem 2: Earphones or mobile device's volume is too low

Solution: Turn the volume of the earphones or mobile device up to increase the volume.

Problem 3: Music track may not be audible

Solution: Make sure that the music track is of a playable format for the mobile device.

Problem 4: Earphones and mobile device might not be connected properly.

Solution: Repeat the connection step via Bluetooth again to make sure that it is connected properly and try again.

## TECHNICAL SUPPORT & WARRANTY

- For Technical Support, email us at [v.info@valore.sg](mailto:v.info@valore.sg).
- For Warranty Registration, visit [www.valore.sg](http://www.valore.sg).

### Cautions:

Read all the instructions and warnings carefully prior to using this product.

- Do not store the headset in a high temperature environment.
- Do not place the headset near a fire or other excessively hot environments.
- Do not expose this headset to moisture or submerge it in liquid. Keep headset dry at all times.
- Do not attempt to charge the headset using any other method or connection other than the headset's provided charging cable.
- Do not disassemble this headset or attempt to repair or modify it in any manner.
- Be cautious of excessive drops, bumps, abrasions or other impacts to this headset. If there is any damage to the headset such as dents, punctures, tears, deformities or corrosion, stop using the headset and contact us immediately via email at [v.info@valore.sg](mailto:v.info@valore.sg), or return this product to the store where you have purchased it from.
- If the product produces an abnormal smell, high temperature (low temperature during normal use), discolours or changes shape abnormally, stop using the product and contact us immediately via email at [v.info@valore.sg](mailto:v.info@valore.sg).

### DISCLAIMER & TRADEMARKS

All information, trademarks, logos, graphics, and images ("Materials") provided on this user manual are copyrighted or trademarked and are the property of Challenger Technologies Limited. Any unauthorized use of any material contained on the instruction manual may violate copyright laws, trademark laws, laws of privacy and communications statutes.

The trademarks, service marks and logos used and displayed in the Materials are registered and unregistered trademarks and service marks of Valore and others. All other registered and unregistered company names, product names and marks mentioned herein the ("Materials") are the property of their respective owners and may be trademarks or registered trademarks.

Complies with  
IMDA Standards  
DA102803



Inspired by Valore Singapore

For full range of Valore products visit [www.valore.sg](http://www.valore.sg)