

# Valore Wireless Smart Scale (VF-004)

# VALORE

Thank you for purchasing the Valore Wireless Smart Scale.

As your healthy lifestyle companion, the Valore smart scale comes with an app to wirelessly sync and monitor critical health data. Keep track of your body fat percentage, hydration level, BMI and other physical components with an easy view within the app that displays charts and graphs of your progress. Plus, the smart scale is designed to look great in any home with a sleek and polished tempered glass surface.

**Important:** Please read the user manual thoroughly before using your Wireless Smart Scale.

Note: Do not use this monitor if you have a pacemaker or is pregnant.

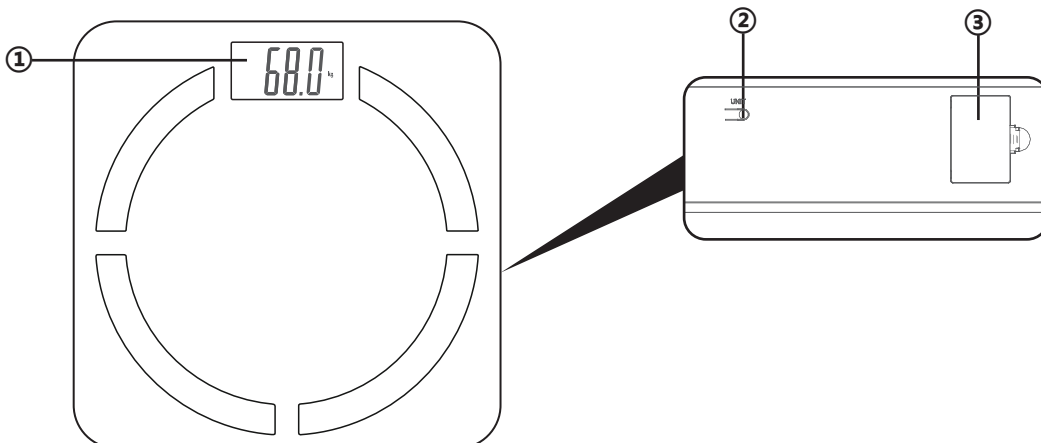
## Specifications:

- Full body composition scan:
  - BMI parameter
  - Body weight
  - Body fat analysis
  - Body water analysis
  - Body bone analysis
  - Body muscle analysis
  - Calories analysis
- 10 user memory
- LDC display screen size: 76 x 40mm
- Capacity: 5 - 180 kg
- Graduation: d = 100g
- Battery type: CR2032 X 2 (not included)
- Material: ABS + Tempered Glass
- Dimensions (L x W x H): 300 x 300 x 22mm
- Weight: 1500g

## Package Contents:

- Wireless smart scale

## UNDERSTANDING THE PRODUCT



- ① Display
- ② Unit
- ③ Battery Compartment

# START USING THE WIRELESS SMART SCALE

## 1) Download the OKOK application

Search and download the 'OKOK' application on the App Store/ Play Store of your mobile device.

## 2) Register

1. Getting started



2. Email and password



3. Name



4. Gender



5. Birthday



6. Height



7. Select image



8. Target weight



### 3) Pairing your smart scale to the app

1. Turn on bluetooth



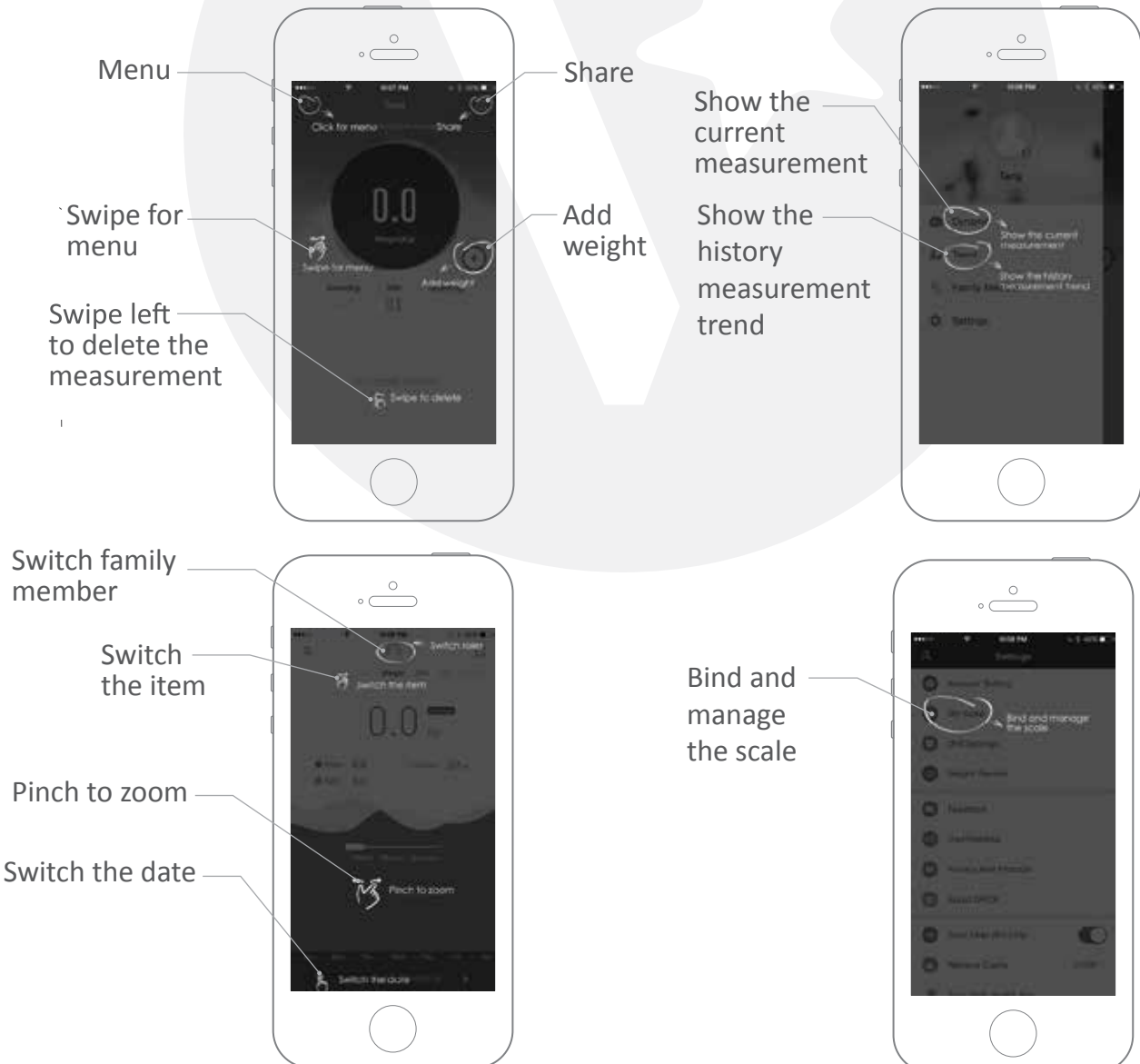
2. Weighing start Stand on the scale



3. Binding and pairing



### 4) Main page overview



## 5) Weighing and binding

1. First weighing, weight and BMI only, no other values

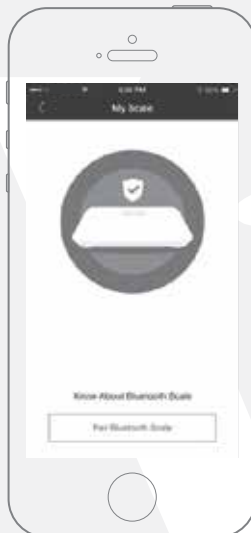


2. Second weighing, 7 measurement values



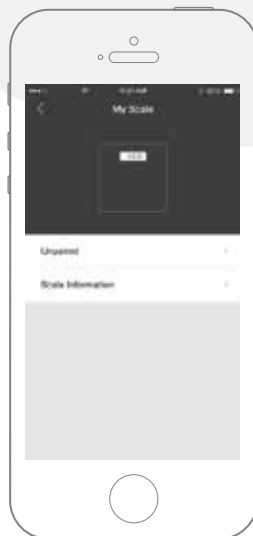
3. Binding

Follow to registration steps Or in the dynamic page, press the pair key, stand on the scale to finish the binding steps



4. Unbinding

Enter into setting page, press my scale Press "unpaired" and "ok" to take place

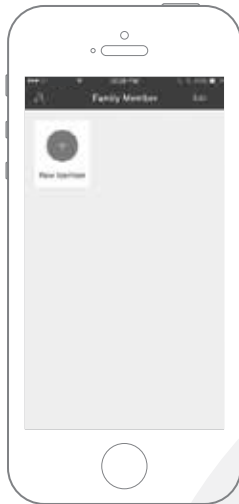


Reminder:

The scale only allow one person use at one time. Please unbind it to let another person to bind it.

## 6) Adding family and recognition

1. Enter into the family member page, press "+", then follow the same as registration steps



2. New weight also can apply for another family member, same as registration steps

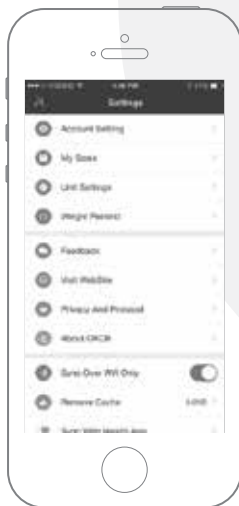


3. Total 8 members can be added, 3kg weight difference define the user automatically

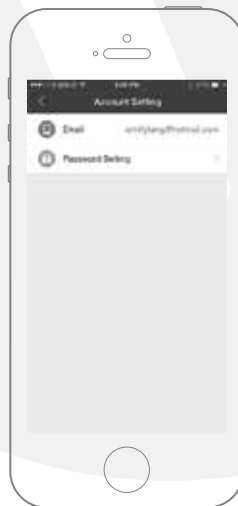


## 6) Adding family and recognition

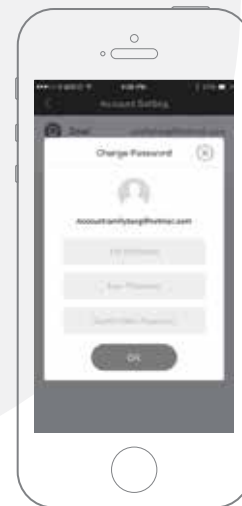
1. Setting page



2. Account setting



3. Password setting press ok to finish



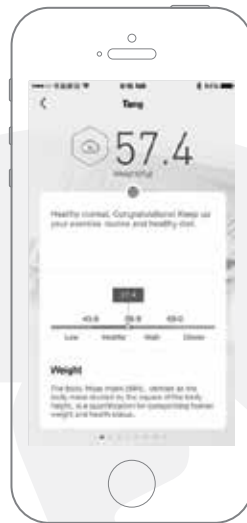
## 7) Health data analysis and health tips

In the health score page, tap on every measurement, the analysis and health tip will appear.

Health score



Weight & tips



BMI & tips



Body fat & tips



Body muscle & tips



Visceral fat & tips



Body bone & tips



Body water & tips



BMR & tips



## TECHNICAL SUPPORT & WARRANTY

- For Technical Support, email us at [v.info@valore.sg](mailto:v.info@valore.sg).
- For Warranty Registration, visit [www.valore.sg](http://www.valore.sg).

### Cautions:

Read all the instructions and warnings carefully prior to using this product.

- Do not store the body composition monitor in a high temperature environment.
- Do not place the body composition monitor near a fire or other excessively hot environments.
- Do not expose this body composition monitor to moisture or submerge it in liquid. Keep body composition monitor dry at all times.
- Do not disassemble this body composition monitor or attempt to repair or modify it in any manner.
- Be cautious of excessive drops, bumps, abrasions or other impacts to this body composition monitor. If there is any damage to the body composition monitor such as dents, punctures, tears, deformities or corrosion, stop using the body composition monitor and contact us immediately via email at [v.info@valore.sg](mailto:v.info@valore.sg), or return this product to the store where you have purchased it from.
- If the product produces an abnormal smell, high temperature (low temperature during normal use), discolours or changes shape abnormally, stop using the product and contact us immediately via email at [v.info@valore.sg](mailto:v.info@valore.sg).

### DISCLAIMER & TRADEMARKS

All information, trademarks, logos, graphics, and images (“Materials”) provided on this user manual are copyrighted or trademarked and are the property of Valore Lifestyle Pte Ltd. Any unauthorized use of any material contained on the instruction manual may violate copyright laws, trademark laws, laws of privacy and communications statutes.

The trademarks, service marks and logos used and displayed in the Materials are registered and unregistered trademarks and service marks of Valore and others. All other registered and unregistered company names, product names and marks mentioned herein the (“Materials”) are the property of their respective owners and may be trademarks or registered trademarks.

Complies with  
IMDA Standards  
DA103331



Inspired by Valore Singapore

For full range of Valore products visit [www.valore.sg](http://www.valore.sg)