

# Valore Wireless Smart Scale (VF-008)

# VALORE

Thank you for purchasing the Valore Wireless Smart Scale (VF-008).

- **Multiple User** - Identifies up to 8 unique users
- **Full body composition scan** - Tracks weight, body mass index (BMI), body fat, hydration and more
- **Keep track of your health in one app** - Sync stats wirelessly with mobile app
- **Four modes** - Share mode, baby weight mode, normal mode, athlete mode
- **Elegant glass platform** - 6mm thick tempered glass with high precision strain gauge sensor

**Important:** Please read the user manual thoroughly before using your Smart Scale.

Note: Do not use this monitor if you have a pacemaker or is pregnant.

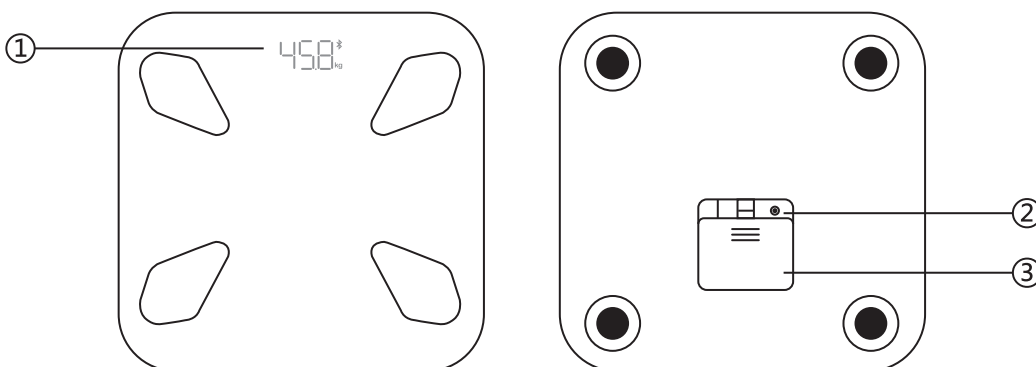
## Specifications:

- Full body composition scan:
  - BMI parameter
  - Body weight
  - Body muscle analysis
  - Body water analysis
  - Body fat analysis
  - Basal metabolic rate
  - Body bone analysis
  - Calories analysis
- 8 user memory
- LED display screen size: 82 x 32.5mm
- Capacity: 5 – 180kg
- Graduation: d=100g
- Battery type: AAA x 4 (not included)
- Material: ABS + tempered glass
- Dimensions (L x W x H): 310 x 310 x 25mm
- Weight: 1850g

## Package Contents:

- Wireless smart scale

## UNDERSTANDING THE PRODUCT



- ① Display
- ② Unit
- ③ Battery Compartment

# START USING THE SMART SCALE

1) Scan the following QR codes or go to the application store to download and install "AIFit".

Remark: Our APP is available for iOS and android device with iOS version 8.0 or Android version 5.0 and Bluetooth 4.0 and above



Google Play Store



iOS App Store

2) Register

1. Getting started



2. Weight & height unit



3. Email and password

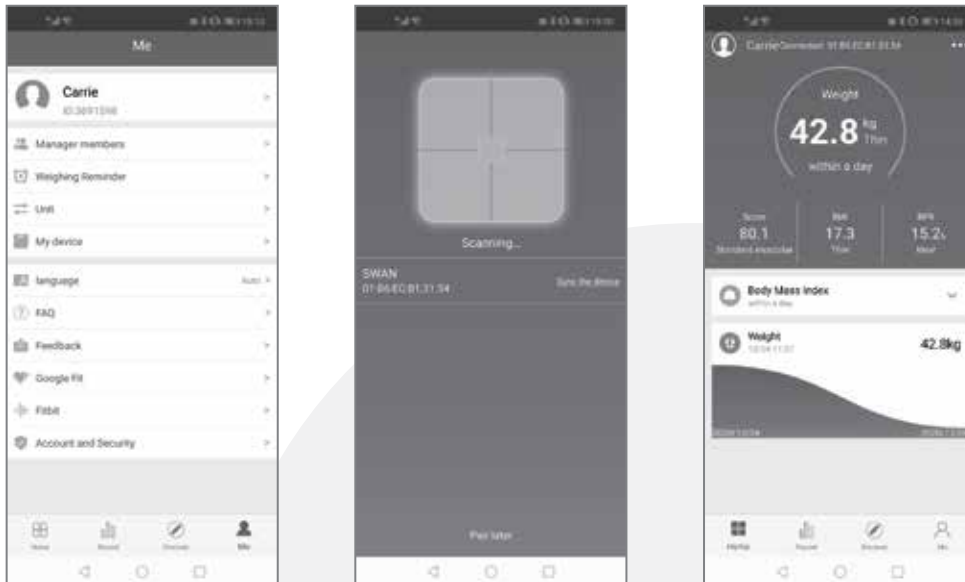


4. Gender, Name, Birthday, Height, Target (For fitness/athletes select Athlete Mode).

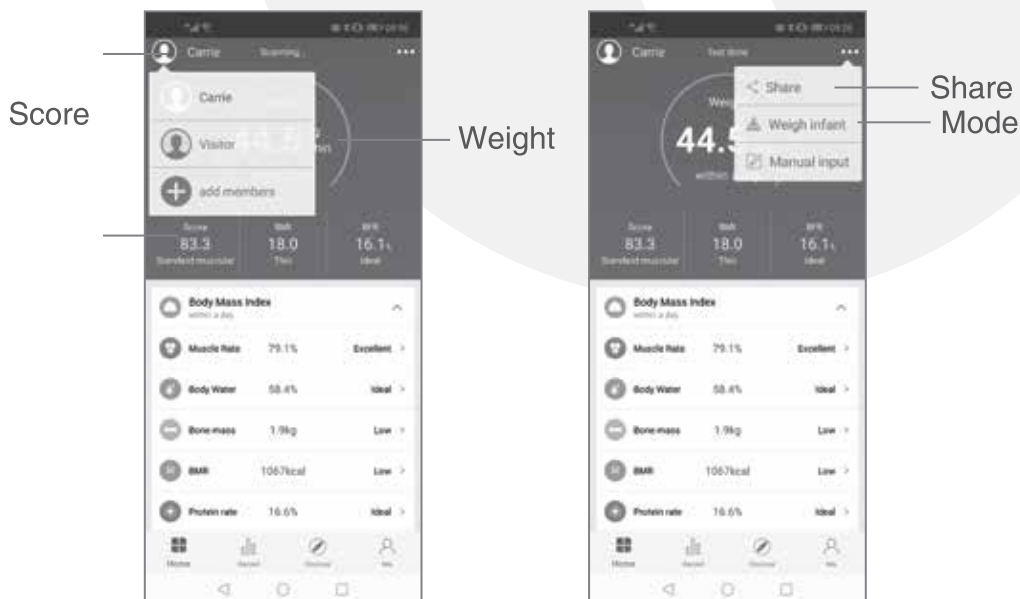


### 3) Pair the device

1. Turn on Bluetooth and open the "Location" or "GPS" When app pair Bluetooth scale, please step on the scale to power on. Then press <Me> and click <My device> to start search, then click <Sync the device> back to <Home> page and you will see the device is: Scanning > Connecting > Connected. Measuring can start after the device is connected



### 4) Main page overview





Show the history measurement trend

Manage members



Me



Bind and manage the scale (add members)



Delete member

## 5) Mode (Share, Normal, Baby weight mode, Athlete mode)

1. Share mode (The test results of your body can be shared with your family or friends)



Click share



Choose share the style



Through selected platforms

2. Baby weight mode (First, measure your weight, then get off the weighing scale. Second, measure your weight together with baby, the application can automatically calculate the baby's weight)



First, measure your weight, then get off the weighing scale.



Second, measure your weight together with baby



Baby Weight

### 3. Normal mode



Click normal



4. Athlete mode (For regular fitness, athletes and such. It is more accurate to test the motion pattern after exercise)



Click on your profile



Choose Athletes Mode

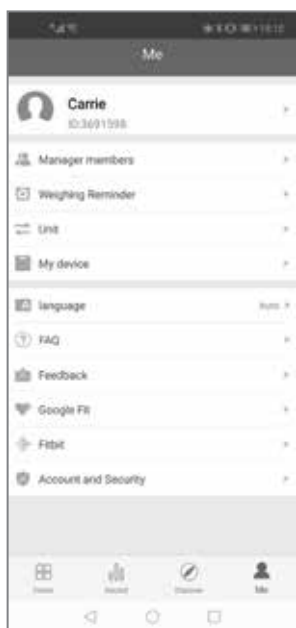
## 6) Weighing and binding

1. First weighing, weight, BMI and other values. Put the scale on hard and flat surface, make sure the display shows "00.0". Step on the platform of the scale with bare feet and stand as steady as possible until the weight reading is shown and locked on the display, and wait until your measure data are shown on the application. Tips: follow steps: Weighing > Analyzing > Test done



## 2. Binding

Follow the registration steps or in the dynamic page, press the My device, stand on the scale to finish the binding steps



My device



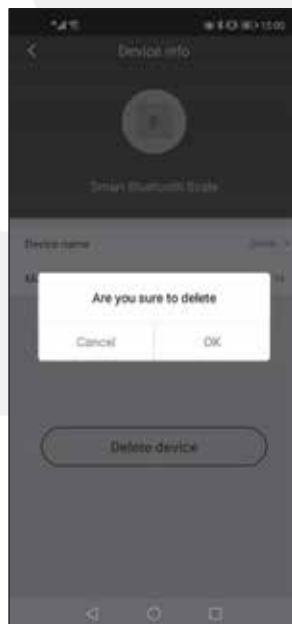
Searching



Connected

## 3. Unbinding

Enter into setting page, select my device, unpaired and ok

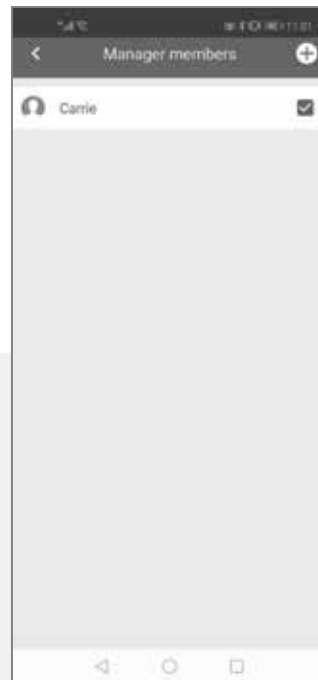


## Reminder:

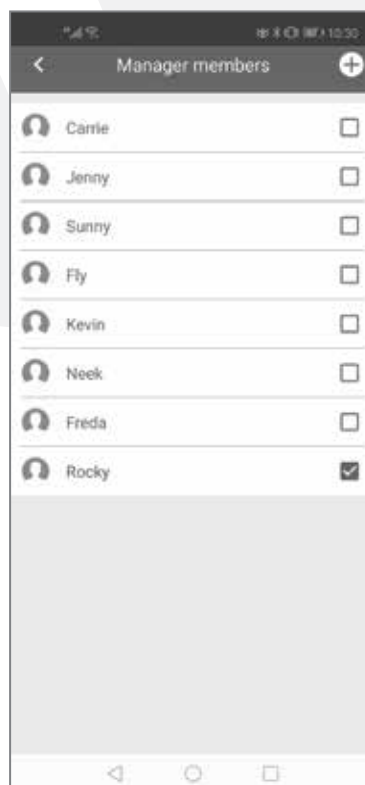
The scale only allow one person use at one time, please unbind it to allow another user

## 7) Adding family and recognition

1. Enter into the Manger member page, press "+", then follow registrtrion steps



2. New weight also can apply for another family member, same as registration steps
3. Total 8 members can be added





## 8) Account and reset password



Account and Security



Confirm to log out



Reset password

## 9) Health data analysis and health tips

In the health score page, tap on every measurement, the analysis and health tip will appear.



Body Type



Weight & tips



BMI & tips



Body fat & tips



Body muscle & tips



Visceral fat & tips



Body bone & tips



Body water & tips



BMR & tips

## TECHNICAL SUPPORT & WARRANTY

- For Technical Support, email us at [v.info@valore.sg](mailto:v.info@valore.sg).
- For Warranty Registration, visit [www.valore.sg](http://www.valore.sg).

### Cautions:

Read all the instructions and warnings carefully prior to using this product.

- Do not store the smart scale in a high temperature environment.
- Do not place the smart scale near a fire or other excessively hot environments.
- Do not expose this smart scale to moisture or submerge it in liquid. Keep smart scale dry at all times.
- Do not disassemble this smart scale or attempt to repair or modify it in any manner.
- Be cautious of excessive drops, bumps, abrasions or other impacts to this smart scale. If there is any damage to the smart scale such as dents, punctures, tears, deformities or corrosion, stop using the smart scale and contact us immediately via email at [v.info@valore.sg](mailto:v.info@valore.sg), or return this product to the store where you have purchased it from.
- If the product produces an abnormal smell, high temperature (low temperature during normal use), discolours or changes shape abnormally, stop using the product and contact us immediately via email at [v.info@valore.sg](mailto:v.info@valore.sg).

### DISCLAIMER & TRADEMARKS

All information, trademarks, logos, graphics, and images (“Materials”) provided on this user manual are copyrighted or trademarked and are the property of Valore Lifestyle Pte Ltd. Any unauthorized use of any material contained on the instruction manual may violate copyright laws, trademark laws, laws of privacy and communications statutes.

The trademarks, service marks and logos used and displayed in the Materials are registered and unregistered trademarks and service marks of Valore and others. All other registered and unregistered company names, product names and marks mentioned herein the (“Materials”) are the property of their respective owners and may be trademarks or registered trademarks.

Complies with  
IMDA Standards  
DA102803



Inspired by Valore Singapore

For full range of Valore products visit [www.valore.sg](http://www.valore.sg)